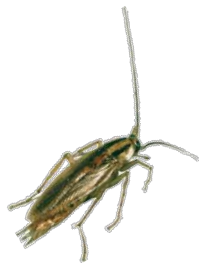


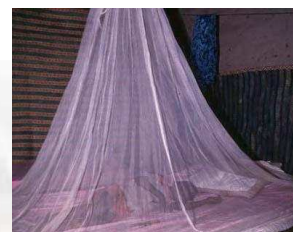
VECTROCID 10EW

YOUR PARTNER FOR EFFECTIVE & SAFE CONTROL OF PUBLIC HEALTH PESTS



ADVANTAGES:

- Very effective for longterm control and destruction of harmful insects.
- Environmentally friendly/low toxicity but strong efficacy.
- Has minimal toxic effects on mammals when used at recommended rates.
- Does not cause harm to fish and bees when applied according to label instructions.



Where to apply

Ants: Nests, runs, walls, drains, ant trails, windows, doors and resting places where ants are seen.

Cockroaches: Walls, cupboards, skirting boards, behind sinks, stoves and pipes. Pay particular attention to cracks and crevices.

Flies: Refuse tips, resting area (eg ceiling, windows, screens).

Fleas: Skirting, floors, kennels and adjacent wall area.

Spiders: Exposed surfaces where spiders are seen, nests and known hiding places.

Silverfish: Walls, cupboards, cracks and crevices, ceilings and enclosed floor spaces.

Houseflies and Mosquitoes: All exposed surfaces where these flying insects may rest (eg walls, ceilings, verandas).

Bed bugs: Skirting boards, floors and adjacent wall area. Machine wash bed linen at time of treatment to destroy bed bugs in sheets and blankets. Apply an alternative treatment to carpets and seek advice on integrated bed bug management practices.

COMPOSITION:

ETOFENPROX 10% w/v

Oil-in-Water Emulsion Formulation



KILLS: Ants, Asian Lady Bugs, Bed Bugs, Bees, Boxelder Bugs, Caddises, Carpenter Ants, Carpenter Bees, Carpet Beetles, Centipedes, Chocolate Moths, Cigarette Beetles, Clover Mites, Cluster Flies, Cockroaches, Crickets, Darkling Beetle, Dermestids, Drugstore Beetles, Earwigs, Elm Leaf Beetles, Fire Ants, Firebrats, Fleas, Flies, Flour Beetles, Grain Weevils, Grasshoppers, Hide Beetles, Hornets, Indian Meal Moths, Larder Beetles, Lesser Grain Borers, Lesser Mealworms, Loopers, Mediterranean Flour Moths, Merchant Grain Beetles, Mealworms, Millipedes, Mosquitoes, Psocids, Rice Weevils, Sawtoothed Grain Beetles, Scorpions, Silverfish, Sowbugs, Spiders, Springtails, Termites, Ticks, Yellowjackets, Warehouse Moths, Wasps, Wood Wasps, Wood-Infesting Borers and Beetles.

FOR USE IN AND AROUND: Apartments, Calf Hutches, Calving Pens and Parlors, Campgrounds, Empty Chicken Houses, Dairy Areas, Dog Kennels, Food Storage Areas, Grain Mills, Granaries, Hog Barns, Homes, Horse Barns, Hospitals, Hotels, Meat Packing Plants, Food Processing Plants, Milkrooms, Motels, Nursing Homes, Rabbit Hutches, Resorts, Restaurants and other Food Handling Establishments, Schools, Supermarkets, Transportation Equipment (Buses, Boats, Ships, Trains, Trucks, Planes), Utilities, Warehouses, Commercial and Industrial Buildings.

APPLICATION RATES

Residual treatment for fly & mosquito control:

Dilute 250-500 ml of Vectroicide 10 EW insecticide in 10 liter of water, spray 1 to 2 L per 100 sq.meter.

Residual spraying for cockroach control:

Dilute 500-1000 ml of Vectroicide 10 EW insecticide in 10 liter of water, spray until the surface is almost completely saturated and the insecticide starts to run off.

Space treatment for fly & mosquito control:

Cold Fog/ULV application: Dilute 1 part of Vectroicide 10 EW insecticide with 9 part of water. Apply 1 to 2 liter of diluted product per hectare with suitable equipment.

Bednet Impregnation: 0.1-0.2 g/sq.m (a.i.), eq. to 1-2 ml of Vectroicide 10 EW per square meter of bednet.

Use higher rates for high infestations.